

DNS-325

PnP-X driver

Installation Guide

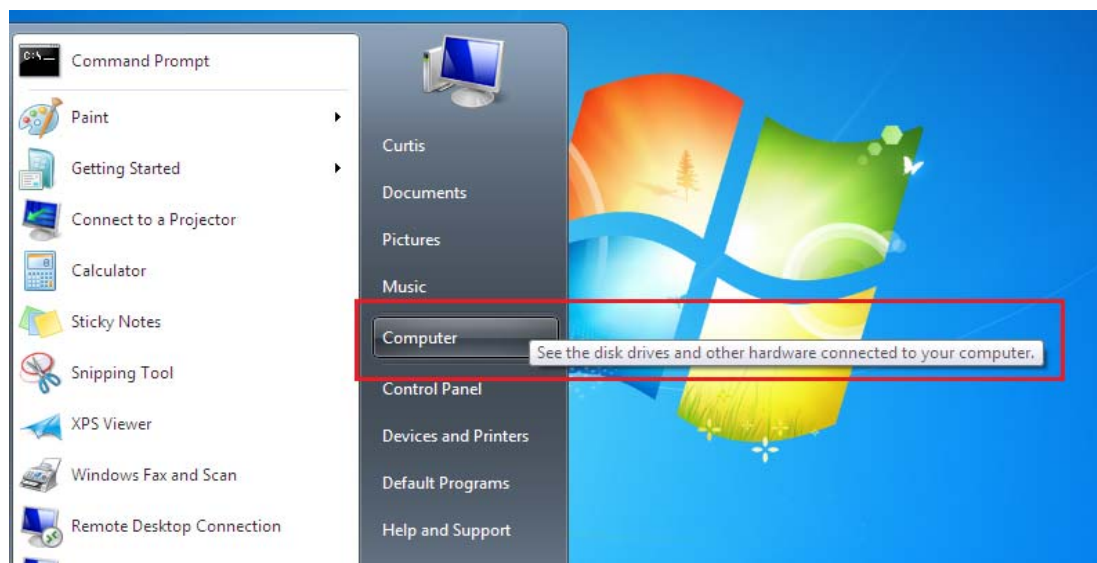
D-Link[®]

Building Networks for People



RECYCLABLE

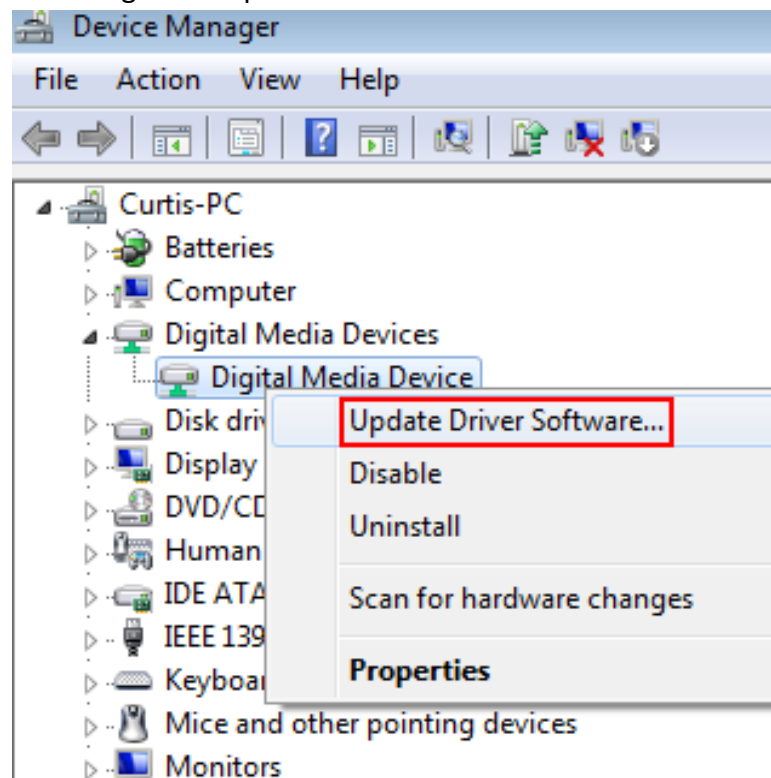
1. Select Computer.



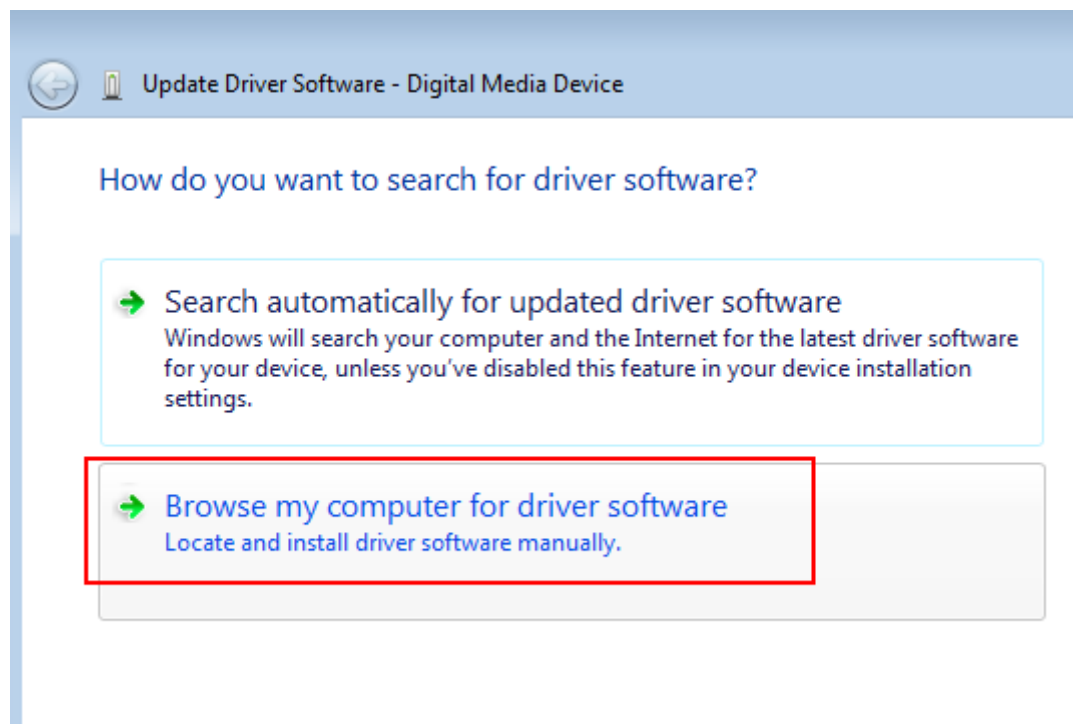
2. Install device in the Network.



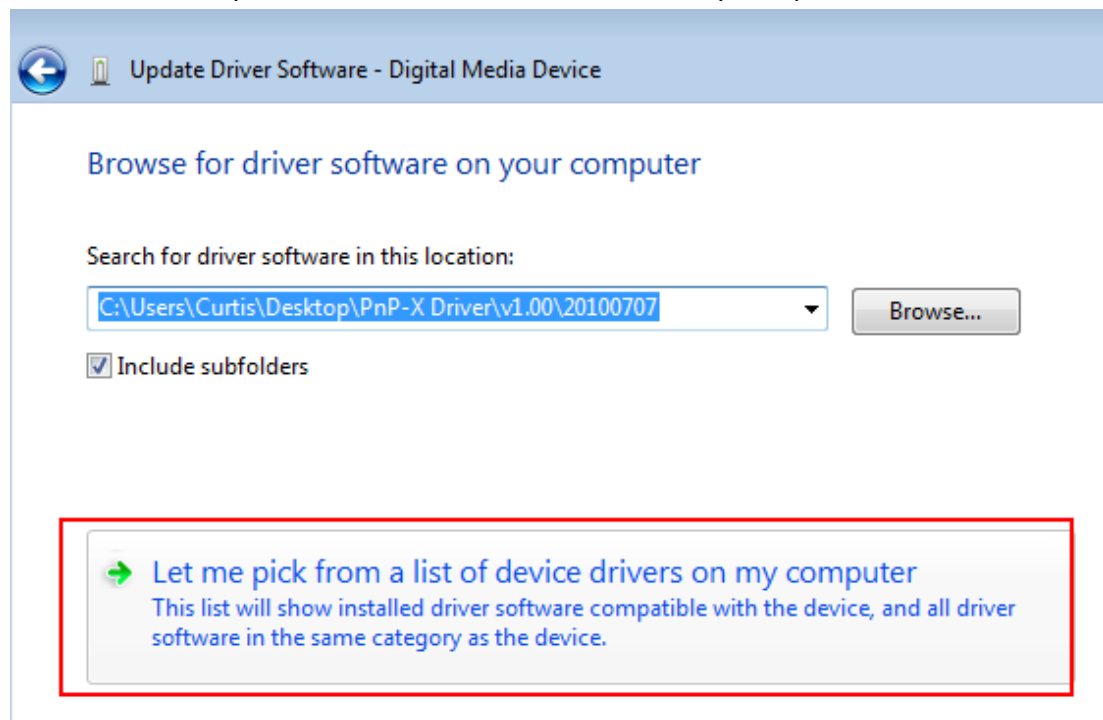
3. Open Device Manager and update driver software.



4. Select "Browse my computer for driver software".



5. Select “Let me pick from a list of device drivers on my computer”.



6. Click “Have Disk” and select the “pnpxnas.inf”.

